

[www.ryujilnu.com](http://www.ryujilnu.com)



# RYUJI INU

W H I T E P A P E R

# Contents

<b>3</b>	INTRODUCTION
<b>4</b>	ABOUT RYUJI
<b>6</b>	RYUJI - THE BEST CRYPTO FOR GAMERS
<b>7</b>	RYUJI INU FEATURES
<b>8</b>	RYUJI TOKENOMICS
<b>10</b>	RYUJI GAMES AND PRIZES
<b>11</b>	ROAD MAP
<b>12</b>	WHY RYUJI TAKES CHARITY SERIOUSLY
<b>13</b>	CONTACT US



---

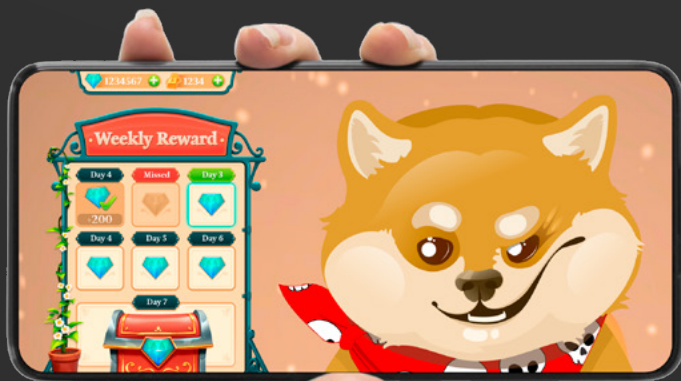
## DISCLAIMER

This document was not written for/as financial advice & does not constitute nor imply a prospectus of any sort. No wording contained herein should be construed as a solicitation for investment. Accordingly, this White Paper does not pertain in any way to an offering of securities in any jurisdiction worldwide whatsoever. Instead, this White Paper describes a cryptocurrency ecosystem and the roadmap for Ryuji Inu LLC.



# INTRODUCTION

Meet Ryuji Inu –  
the Most Beloved  
Dog of the  
Gaming World!



At the beginning, there was Dogecoin. Thanks to DOGE, everyone in the world learned that blockchain technology doesn't have to be hard and complicated, and that all people can be empowered with the ability to use cryptocurrencies in an easy and fun way.

Then, there was Shiba Inu. SHIB proved that the meme cryptocurrency phenomenon is here to stay, and that meme tokens have a long-lasting potential to massively benefit millions of people globally, all while benefiting individuals, charities and communities all around the world.

**Now, it's time for you to meet RYUJI INU – the next step in the evolution of meme tokens.**

Ryuji Inu is here to continue what Dogecoin and Shiba Inu have started, all while massively improving many shortcomings of DOGE or SHIB in order to help spread global blockchain adoption. In order to do that, RYUJI aims to realize an ambitious plan of being not only the most profitable, but also the most fun meme cryptocurrency in the crypto ecosystem. With RYUJI, you will be able to earn valuable rewards in the most entertaining way possible!

RYUJI is a groundbreaking, next-generation meme cryptocurrency with a clear goal in mind: to revolutionize the world of Play-to-Earn (P2E) Gaming, to bring entirely new value and utility to streamers and gamers, and last but not least:

**to show once and for all that the world of gaming belongs to the people!**



# ABOUT RYUJI

Discover the Great Potential  
of Ryuji Inu

**Ryuji Inu (RYUJI) is a Binance Smart Chain (BSC) token inspired by Ryuji - one of the most famous and beloved dogs on the Internet!**

Ryuji is a cute and funny Japanese shiba inu dog who has become a massive global celebrity thanks to his lovely, expressive face. With over 317,000 Instagram followers, Ryuji is a true sensation bringing happiness to people around the world.'

What distinguishes RYUJI the most from other meme tokens is the fact that we take our mission of making people happy seriously. In order to do that, Ryuji Inu was specifically designed to address the needs of the people who are always the first to embrace technological innovations - the gamers!

**Ryuji is already one of the most popular dogs in the world.**

**We want to make him the most famous dog in the metaverse as well!**





## Our Vision

More than anything else, we want to continue Ryuji's goal of making people happy in the virtual world.

To achieve this, RYUJI combines groundbreaking technologies like DeFi, NFTs P2E gaming and metaverse to create a revolutionary token. We believe that gamers have the potential to finally make global cryptocurrency adoption widespread!



## Our Mission

The mission of Ryuji Inu is to truly give back to the community through features.

Such as Charity Wallet (1%), Cash Prize Games (2%) and numerous other profitable use cases: Ryuji Swap Wallet, NFT'S, NFT marketplace and metaverse! Cryptocurrencies don't have to be complicated - they can be profitable, easy-to-use and fun - and RYUJI will prove it once and for all!



# RYUJI – THE BEST CRYPTO FOR GAMERS

## Why Does the Gaming World Need Ryuji Inu?

Dogecoin and Shiba Inu were both great meme cryptocurrencies, but they made one big mistake. They failed to cater to the most innovative community in the world: the gamers!

The global gaming industry market is already at a truly tremendous size. The gaming industry valuation is expected to grow from \$229.16 billion in 2021 to \$545.98 billion in 2028.

Gaming is a groundbreaking, innovative and rapidly expanding industry – there’s no doubt about it. But shockingly, this huge industry has somehow failed to embrace some of the most advanced technologies of our time, such as blockchain, crypto and NFTs.

This situation is slowly beginning to change, mainly thanks to the popularity of Play-to-Earn (P2E) games, which are already valued at over \$25 billion. Unfortunately, the adoption of blockchain technology within the gaming world is still proceeding at a suboptimal pace.

The most ambitious goal of Ryuji Inu is making blockchain adoption widespread within the gaming industry by creating a cryptocurrency that would truly fulfill all of the needs of gamers. In order to do that, RYUJI was created specifically with gaming in mind – it was made by the gamers and for the gamers.

**Thanks to Ryuji Inu, the worlds of gaming and crypto will finally be merged.** You will be able to earn valuable cash prizes, token rewards and priceless NFTs by playing fun games and participating in exciting tournaments, and the rewards you earn will be able to be monetized and used to raise your prestige in the metaverse!

**Ryuji is designed to change this.**



# RYUJI INU FEATURES

## Why You Should Invest In Ryuji

RYUJI empowers the community of gaming fans around the world by making everyone happy with prosperous growth perspectives and income opportunities. But how exactly is Ryuji Inu able to do that?



### Transparent, Fair & Community-Driven

- Smart contract fully audited by InterFi
- Experienced & dedicated team holds ZERO tokens
- RYUJI INU is registered as an LLC In The USA



### Maximally Profitable Tokenomics

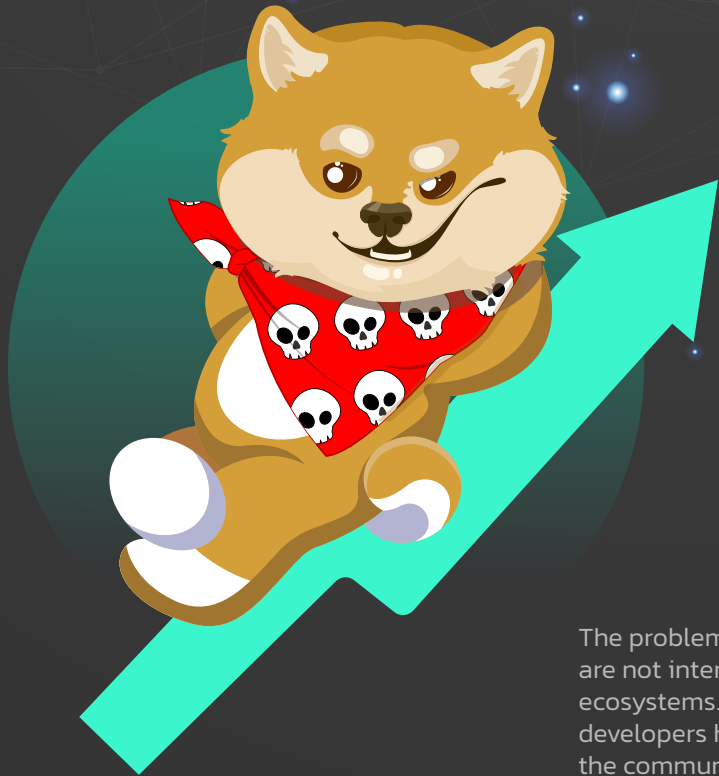
- 100% Liquidity burnt (Anti-Rug)
- 90% Supply burnt
- Anti-Whale Mechanics (Max wallets are restricted to 2% of the supply)
- Anti-Dump System (Maximum transaction set to 0.2%)



### The Fastest Growing Gaming Ecosystem In the Metaverse!

- Numerous functionalities and real use cases (NFTs & NFT Marketplace, P2E Games, Ryuji Swap, Arbitrage and many, many more!)
- Profits are reinvested in RYUJI and used by the team to constantly grow, expand and evolve the RYUJI ecosystem





# RYUJI TOKENOMICS

## Learn Why Ryuji Inu Is a Good Investment

The problem of many meme cryptocurrencies is that their tokenomics are not intended for long-term profit and a huge expansion of their ecosystems. Ryuji is different! Our experienced team of blockchain developers has designed the \$RYUJI tokenomics specifically to provide the community with maximum profit!

### Buying Taxes

---



#### Holder Rewards - 1%

Holder Rewards are similar to dividends on the stock market. In simple words, you will be rewarded just for holding Ryuji Inu in your crypto wallet – you don't have to do anything!



#### Liquidity - 5%

5% out of every Ryuji purchase will go directly to the liquidity pool. This will help strengthen the project's price floor in the future, and guarantee that you can always trade \$RYUJI without any problems.



#### Marketing/DEV - 6%

In the crypto ecosystem, marketing is everything! That's why 6% of each RYUJI purchase will go to the Marketing/DEV wallet – 100% of the funds in this wallet will be used to introduce millions of people to Ryuji Inu and make the project grow.



#### Charity - 1%

We want to make people happy, just like Ryuji! In order to do that 1% of every RYUJI purchase will go to various charity organizations which help building clean water projects, promoting education, supporting health care, as well as providing other relief programs in Africa, Asia and any other regions in need.





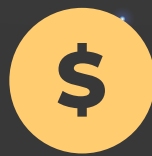
## Selling Taxes

---



### Holder Rewards - 1%

1% of every Ryuji Inu sale will be evenly distributed to all RYUJI token holders. In other words, whenever someone buys or sells RYUJI tokens you will earn money, which means that Ryuji Inu can be your source of blockchain-based passive income!



### Liquidity - 6%

6% of each RYUJI sale goes directly to the liquidity pool, which makes it easy to trade RYUJI tokens and helps the project to grow.



### Marketing/DEV - 6%

Promotion is essential to make RYUJI the most popular dog in the metaverse. That's why 6% of each RYUJI transaction will be used to promote the project and make it grow much bigger with every passing day!



### Charity - 1%

The goal of Ryuji Inu is to make people happy! 1% of every RYUJI sale will go to charities that provide people in Africa, Asia and any other regions in need with the access to clean water projects, quality education, health care, as well as other relief programs.



### Prize Games - 2%

2% out of every RYUJI token sale will go to the prize pool, and you will have a chance to win it!



# RYUJI GAMES AND PRIZES

## Win Valuable Rewards With Ryuji Inu!

The mission of RYUJI is to make you happy. And what can make people more happy than winning awesome prizes?

Members of the Ryuji Inu community will be empowered with amazing opportunities to win huge prizes. Games with prizes will be held frequently, and every RYUJI token holder will have a chance to participate and win!

2% Weekly Prizes will go to holders who win the games. But that's just the beginning! In the future, you will also be able to win priceless NFTs which you will be able to show off to your friends in the metaverse!

### But that's not all!

Gaming is one of the most important areas of development for RYUJI, so you can expect many more gaming-focused features to be added very soon. These will include more exciting prize awards, a greater variety of Ryuji minigames, and last but not least – a fully functional, interactive and immersive Ryuji Inu metaverse!



# ROAD MAP

## Ryuji Inu's Ambitious Plans For the Future

RYUJI is a fun token, but our plans are very serious. Ryuji Inu is on a mission to empower millions of gamers around the world. In order to do that maximally efficiently, we have split our plans for global RYUJI adoption into third phases which will be concluded one by one:



### Phase 01: The Beginning

- New Website and Branding
- Ryuji Inu LLC was filed and accepted
- Initial Community Building
- Smart Contracts
- Inter-Fi Audit
- Successful Presale
- PancakeSwap Launch
- Influencer Marketing
- Listing on CoinGecko
- Listing on CoinMarketCap
- Post Launch Marketing PR
- Prize Winning Game
- 8k Telegram Members
- 5k Holders

### Phase 02: The Expansion

- Charity Donations
- Community / Team Building
- Giveaways & Cash Prizes
- 20k Twitter Followers
- 20k Telegram Group Members
- Banner advertising on Dextools
- Bigger Influencers
- Ryuji Swap
- Amazing Partnerships Announced
- P2E NFT Game
- ETH Contract Bridging
- 10k Holders

### Phase 03: To the Moon!

- Listing on Major Exchanges
- Influencer Marketing Push
- Launch of Merchandise
- Even More Huge Partnerships!
- NFT Marketplace
- Weekly Press Releases
- Arbitrage
- 35k Telegram Member
- 35k Twitter Followers



# WHY RYUJI TAKES CHARITY SERIOUSLY



**Ryuji Inu Cares About a Strong Community and Believes In Humanity – Help People In Need With Ryuji!**



Many digital currencies in the blockchain ecosystem talk about charity, but only few of them actually take charity seriously. Ryuji Inu is different – **while RYUJI is all about fun and games, charity is one of the things that we don't joke about.** We will use the capital accumulated by RYUJI to actually help millions of people around the world, and especially those in areas where our help is needed the most.



## Did you know?

- **Only 16%** of human beings residing in the African continent have the privilege to consume clean water via a household faucet.
- Diseases from water-borne contamination are extraordinarily common. **More than 2 million youngsters die** from ailments because of terrible water quality every year.
- Kids throughout the African continent **leave out over 440 million school days** because of water-associated diseases.
- A startling **1 in 8 human** beings drinks water that can potentially kill them!

Our mission is to make people happy – not just RYUJI token holders, but everyone else as well! That's why a fraction of each Ryuji transaction will be dedicated to charity organizations which help building clean water projects, promoting education, supporting health care, as well as providing other relief programs in Africa, Asia and any other regions in need. Due to the creation of wells, young girls will be able to achieve education, and for rural regions, a single well can even serve as a water supply source for a whole village!

**It's unacceptable and we need to change it!**



www.ryujilnu.com



**Join the Community of  
Ryuji Inu Holders!**

## CONTACT US

For RYUJI, community is the most important thing in the world. Our inclusive, vast, democratic community will help you meet like-minded individuals and learn more about crypto in a fun way. We welcome everyone, so don't hesitate and become a member of the Ryuji Inu family now!

Contact Us



Coming Soon